



HARLEQUIN

X

SOPHIE ROBINSON

DIGITAL DESIGN BOOK 2023





HARLEQUIN

×

SOPHIE ROBINSON

HARLEQUIN AND SOPHIE ROBINSON PRESENT
A VIBRANT RANGE OF NATURE INSPIRED
DESIGNS, ENVELOPING INTERIORS WITH
JOYOUS COLOUR CONFIDENCE

The 'queen of colour', Sophie Robinson meets the vibrantly
hued Harlequin, in an uplifting, joy filled range of fabric
and wallpaper.

Inspired by the woodland garden of Sophie's countryside home,
this collection presents a juxtaposition of archive and abstract
pieces, looking upwards towards basking tree canopies and out
across carpeted meadows, dotted with jewel petaled flowers.
Lazy days, picnicking and pond dipping stir memories in inviting
colourways of time basking in nature.

"It's no secret that I'm all about colour, so of course, I jumped
at the chance to work with Harlequin... Many of the designs
take their lead from the landscape that surrounds my home,
such as our three-meter woodland inspired impressionist panel
or Dahlia Bunch's botanical bouquet. In contrast, Sherbet
Stripe is a rainbow of my favourite colours, gathered like a
candy cane of pure happiness." - Sophie Robinson

Comprising 10 wallpapers, eight prints and seven weaves, the
collection's colours take their names from gems and precious
stones such as Ruby, Emerald, Amethyst and Rose Quartz.

Many fabrics in the collection have been produced using our
new digital pigment inks, which, are considered one of the
most sustainable and environmentally friendly ink options in
the world. Additionally, BCI cotton has been used throughout
and our materials are all responsibly sourced and ethically
produced, with all wallpaper printed in the UK on FSC certified
substrates, from sustainable, traceable sources.

THE LAUNCH COMPRISES TWO BOOKS:

Sophie Robinson x Harlequin | Wallpaper
Sophie Robinson x Harlequin | Fabric

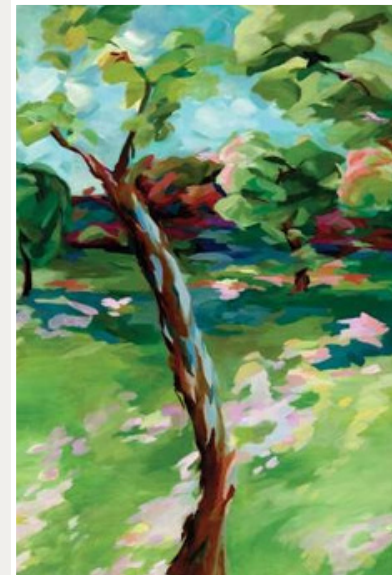


SOPHIE'S HOME OFFICE

GET THE LOOK

IN THE WOODS *with* SHERBET STRIPE

The heart of Sophie's home is like an exploration into woodland, revealing the wonder of nature in psychedelic colour. In the Woods is an expression of the purity of nature's beauty with the power of colour at play. A panel design, it was hand painted in the Harlequin studio, depicting our interpretation of Sophie's woodland garden, with highlights of floral pinks and lilac run throughout, contrasting with a palette of lush and jewel-toned greens. Sherbet Stripe sits pretty and mischievously in the fore, a confident burst of Sophie's signature shades on a directional diagonal stripe.



IN THE WOODS

113068



PLUSH
VELVET

SA1F3F3R909 1N



SHERBET
STRIPE

121192



WIGGLE

134002

Tap on product images to find out more

GET THE LOOK

SOPHIE'S HOME OFFICE



"I am obsessed with stripes and when you like mixing floral patterns, like I do, a stripe can really cut through the chaos... Putting it on the diagonal, as we have in Paper Straw Stripe, has created something that feels more directional, more exciting."

Sophie Robinson



SOPHIE'S KITCHEN DINER

GET THE LOOK

WOODLAND FLORAL *with* RIBBON STRIPE

Woodland Floral is a sublimely decorative hand-drawn archive design, representative of Sophie's country garden and the woodland that surrounds her home. An illustrative wallpaper of peony, primrose and laburnum alludes to time spent outdoors and the ever-giving joys of springtime. A coordinating fabric is available. By contrast, Paper Straw Stripe is a classic picnic hamper design, festive and delighting in simple pleasures, it is brought to life in fabric in a range of cheerful colourways. Citrine is pure sunshine, brought indoors.



WOODLAND
FLORAL

113057



POWDER
PLUSH VELVET

143431909110



PAPER STRAW
STRIPE

133991



RIBBON
STRIPE

121185

Tap on product images to find out more

GET THE LOOK

SOPHIE'S KITCHEN DINER



“Dappled Leaf is a focal point design. In the velvet, it is a great statement fabric for an armchair because it is so striking.”

Sophie Robinson



SOPHIE'S GUEST ROOM

GET THE LOOK

DAISY TRELLIS with BASKET WEAVE

Layering charm in abundance, sweet, nostalgia-inspired designs come together in frivolous floral elegance. Sweet daisies, picked from the garden and hand painted in the studio, link together to create the Daisy Trellis wallpaper, which retains the intricate detail of each individual flowerhead. A petit design that oozes timeless appeal with just a hint of vintage playfulness. Inspired by baskets laden with home grown vegetables and tablecloths piled high with delicious kitchen garden delights, Basket Weave is a dual-purpose midscale cotton ready to upholster with joy.



DAISY
TRELLIS

113044



PLUSH
VELVET

SA1F3F3R909 1N



BASKET
WEAVE

121178



DAPPLED
LEAF

121189

Tap on product images to find out more

GET THE LOOK

SOPHIE'S GUEST ROOM



“This collection is all about nature running wild. It has been magnified in its psychedelic colours. Infused with enchantment, these are fantasy florals in fabric and wallpaper. Wonderland Floral is a vivacious hero of this sentiment.”

Sophie Robinson



SOPHIE'S BEDROOM

GET THE LOOK

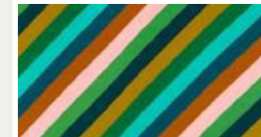
WONDERLAND FLORAL *with* MEANDER

The wonder of an archive design comes to life in wallpaper, showing the sporadic and sometimes untameable nature of flora. Wonderland Floral excites and invigorates the senses with a whimsical design that rejoices in vibrancy. A fantastic link between period and contemporary interiors, Wonderland Florals's cotton linen ground displays a slightly textural appearance. In contrast, Meander is a bold, contemporary woven fabric, inspired by the winding woodland walks that surround Sophie's home, tempting you to slow down and wander. A drapery quality jacquard, its fine highlight stripe adds a detailed pop of contrasting colour.



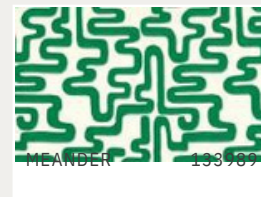
WONDERLAND
FLORAL

113067



SHERBET
STRIPE

113231919913



MEANDER

193709



DAPPLED
LEAF

121191

Tap on product images to find out more

GET THE LOOK

SOPHIE'S BEDROOM



“This entire collection is about being playful with pattern. It is so joyful to see a Wiggle cushion next to a floral, next to a Ribbon Stripe. Mixing abstract painterly patterns with outdoor charm, and archive prints reveals some truly exciting interiors.”

Sophie Robinson



WILDFLOWER MEADOW *with* BASKET WEAVE

Taken from the Harlequin archive, Wildflower Meadow is a loosely interpreted impressionist floral fabric that sings of colour confidence. Repainted in the studio, its joyous aesthetic packs a vibrant, flower power punch. Paired with Basket Weave, pastel-hued summer days come to mind with the bright and light green loops and crosses of the basket's design making this fabric feel textured and dynamic, reminiscent of days spent, sat on lawns carpeted in ditsy flowers, enjoying delicious treats from lovingly prepared hampers.



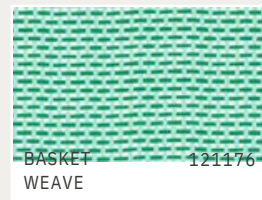
WILDFLOWER
MEADOW

121185



QUADRANT
ATLANTIS

143430919714



BASKET
WEAVE

121176



WIGGLE

134003

Tap on product images to find out more



“Dappled Leaf is the most gloriously versatile print, moving seamlessly from wallpaper to drapes and upholstery. It has such a lovely depth and sense of movement in the design.”

Sophie Robinson



DAPPLED LEAF *with* WILDERNESS

Blending nature's raw qualities with the joy of the abstract, this collection dabbles in daydreams and reality. Dappled Leaf recalls absent-mindedly looking up as cascading leaves fall from a canopy of bowing branches, walking through the shifting seasons in its four considered colourways. First produced as a block printed wallpaper by Jeffrey & Co. circa 1905, Dappled Leaf comes as both a fabric and wallpaper. Wilderness, awash with colour and texture, is an abstract take on the drenched countryside through a cosy window view. Bright floral pops transition between distant views of cascading hills, creating a gorgeously atmospheric weave.



DAPPLED
LEAF

113045



GARDEN
TERRACE

113333999917



WILDERNESS

135995



WILDFLOWER
MEADOW

121186

GET THE LOOK

Tap on product images to find out more

GET THE LOOK



“Archive prints give a feeling of nostalgia at home. It’s comforting to have something that feels familiar in our homes but also, which plays to our love of being a little daring in our colour choices. We’ve rebooted these designs for the 21st century with this electric palette; one hand in the past and one hand firmly in future.”

Sophie Robinson

WIGGLE

The joy of the collection is not only the colour but the texture. As we experience nature with all our senses, so too must we delight in seeing and feeling the prints and patterns as designed by Harlequin x Sophie Robinson. Wiggle is a delightfully free design, following the flightpath of a butterfly, fluttering and bumbling around the garden. In a wallpaper the surface printed design leaves an inky butterfly footprint. In the embroidery, the insect's wiggle jumps from the fabric in an embroidered thread.



WIGGLE

113062

PLUSH
VELVET

SA1F3F3R909 1N



WIGGLE

134000

WONDERLAND
FLORAL

121181

Tap on product images to find out more



DAISY TRELLIS 113043



DAISY TRELLIS 113044



DAHLIA BUNCH 113055



DAHLIA BUNCH 113056



DAPPLED LEAF 113045



DAPPLED LEAF 113046



DAPPLED LEAF 113047



DAPPLED LEAF 113048



IN THE WOODS 113068



RIC RAC 113060



RIC RAC 113061



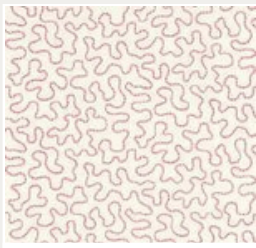
STICKY GRASS 113052



STICKY GRASS 113053



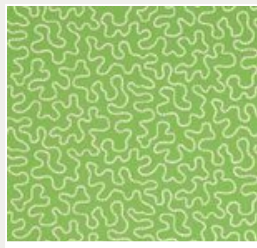
STICKY GRASS 113054



WIGGLE 113062



WIGGLE 113063



WIGGLE 113064



WOODLAND FLORAL 113057



WOODLAND FLORAL 113058



WOODLAND FLORAL 113059



WONDERLAND FLORAL 113065



WONDERLAND FLORAL 113066



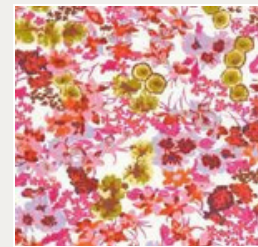
WONDERLAND FLORAL 113067



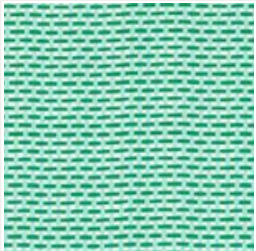
WILDFLOWER MEADOW 113049



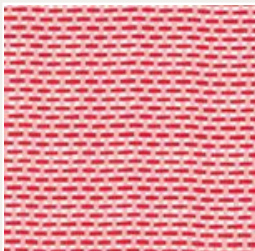
WILDFLOWER MEADOW 113050



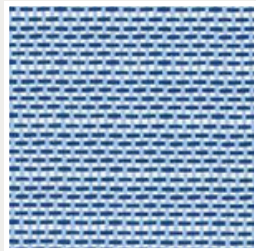
WILDFLOWER MEADOW 113051



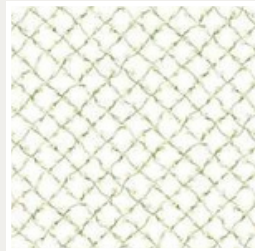
BASKET WEAVE 121176



BASKET WEAVE 121177



BASKET WEAVE 121178



DAISY TRELLIS 121194



DAHLIA BUNCH 121172



DAPPLED LEAF 121188



DAPPLED LEAF 121189



DAPPLED LEAF 121190



DAPPLED LEAF 121191



SHERBET STRIPE 121192



SHERBET STRIPE 121193



WILDFLOWER MEADOW 121184



WILDFLOWER MEADOW 121185



WILDFLOWER MEADOW 121186



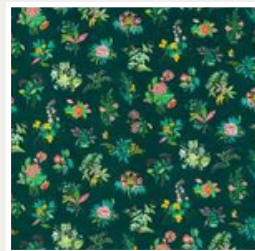
WILDFLOWER MEADOW 121187



WOODLAND FLORAL 121173



WOODLAND FLORAL 121174



WONDERLAND FLORAL 121175



WONDERLAND FLORAL 121179



WONDERLAND FLORAL 121180



WONDERLAND FLORAL 121181



WONDERLAND FLORAL 121182



WONDERLAND FLORAL 121183



GARDEN TERRACE 133996



GARDEN TERRACE 133997



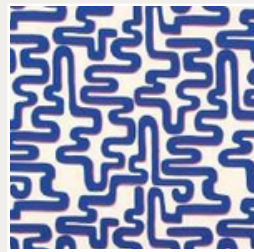
GARDEN TERRACE 133998



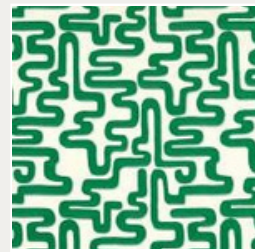
JEWEL BEETLES 133982



JEWEL BEETLES 133983



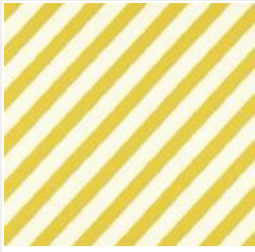
MEANDER 133988



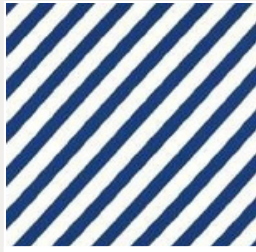
MEANDER 133989



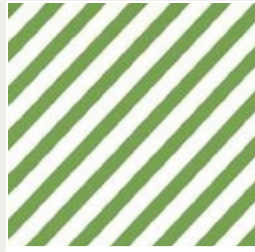
PAPER STRAW STRIPE 133990



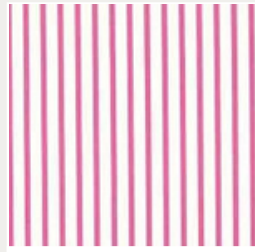
PAPER STRAW STRIPE 133991



PAPER STRAW STRIPE 133992



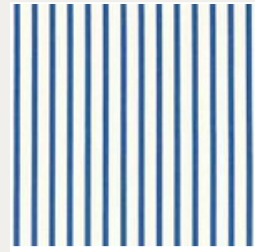
PAPER STRAW STRIPE 133993



RIBBON STRIPE 133984



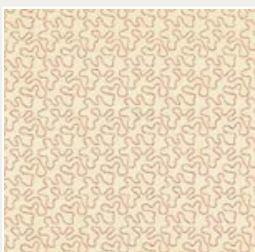
RIBBON STRIPE 121185



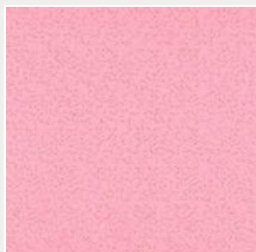
RIBBON STRIPE 133986



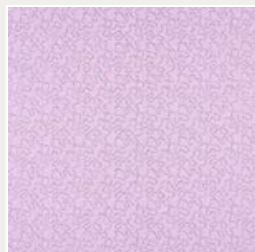
RIBBON STRIPE 133987



WIGGLE 134999



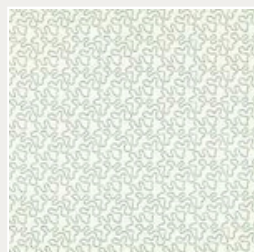
WIGGLE 134000



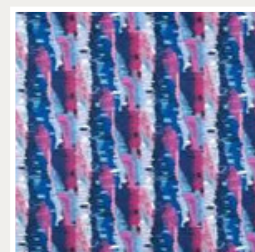
WIGGLE 134001



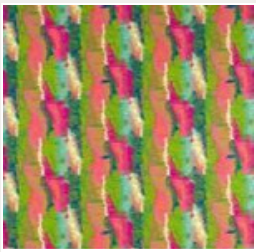
WIGGLE 134002



WIGGLE 134003



WILDERNESS 133994



WILDERNESS 133995



SANDERSON DESIGN GROUP HEAD OFFICE
Chalfont House, Oxford Road,
Denham UB9 4DX
Tel: + 44 (0) 20 3457 5862

PRESS OFFICE
Email: press@sandersondesigngroup.com
Tel: + 44 (0) 1895 221005

CONSUMER & TRADE ENQUIRIES
Email: enquiries@sandersondesigngroup.com

For further information:
harlequin.sandersondesigngroup.com
To find your nearest stockist:
harlequin.sandersondesigngroup.com/find-a-retailer

LONDON SHOWROOM
Design Centre Chelsea Harbour, First Floor,
South Dome, Lots Road, London, SW10 0XE
Tel: + 44 203 903 3700
Email: showroom@sandersondesigngroup.com

NEW YORK SHOWROOM
D&D Building, 979 3rd Avenue, Suite 409
New York, NY 10022
Tel +1 212 319 7220
sales-ny@sandersondesigngroup.com

CHICAGO SHOWROOM
222 Merchandise Mart Place, Suite 6-117A
Chicago, IL 60654
Tel +1 312 929 2058 sales-chicago@sandersondesigngroup.com

DUBAI SHOWROOM
The Prism Tower, Office 2708, Floor 27,
PO Box 391982, Business Bay, Dubai,
United Arab Emirates
Tel: +971 4361 9766
Email: infome@sandersondesigngroup.com

NETHERLANDS SHOWROOM
ETC Licht & Interieur, Randweg 20,
4104 AC Culemborg
Tel: +31 65349 3696
Email: international@sandersondesigngroup.com

GERMANY SHOWROOM
Kronenstrasse 4, 76133 Karlsruhe
Tel: +49 721 981 985 60
Email: verkauf@sandersondesigngroup.com